



**LC602 Series
Tension/Compression**

±50 to ±10,000 lb
 ±200 to ±44,000 N
 1 Newton = 0.2248 lb
 1 daNewton = 10 Newtons
 1 lb = 454 g
 1 t = 1000 kg = 2204 lb

- ✔ High Quality Stainless Steel Construction
- ✔ FM/CSA Approved Intrinsically Safe Standard
- ✔ Rugged, Economical Design

Model LC602 is a heavy duty industrial load cell designed for industrial weighing and scale applications. The LC602 offers a highly accurate, rugged design in a small, economical package.

SPECIFICATIONS:

Excitation: 10V ac/dc (15V max)
Output: Range ≤500 lb: 2 mV/V
 Range >500 lb: 3mV/V ±0.25 % FSO
Accuracy Class: 0.03% FSO
Linearity: ±0.03% FSO
Hysteresis: Range ≤500 lb: ±0.05% FSO
 Range > 500 lb: ±0.03% FSO
Repeatability: ±0.02% FSO
Zero Balance: ±1.0% FSO
Operating Temp. Range:
 -34 to 82°C (-30 to 180°F)
Compensated Temp. Range:
 16 to 71°C (60 to 160°F)
Thermal Effects:
 Zero: ±0.0025% FSO/°F Span: ±0.0010%Rdg/°F

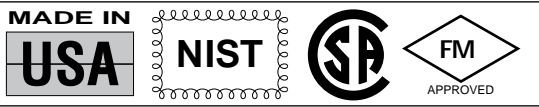
**For Sales and Service
In U.S.A. and Canada**

**1-800-872-3963SM
1-800-USA-DYNE**

International Customers Dial
(614) 965-9340
 24-Hour FAX (614) 965-9438

OMEGADYNESM FAX
 OMEGADYNE's 24-Hour
 On-Line Publishing Service
**1-800-344-3963SM
1-800-DIG-DYNE**
 Document # 3616

OMEGADYNE, Inc.
 149 Stelzer Court, Sunbury, OH 43074
<http://www.omegadyne.com>
 e-mail: info@omegadyne.com



**SPEC SHEET
LC602**

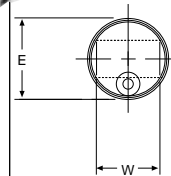
Interchangeable with
Model TC-BB

**HEAVY DUTY
CONSTANT
MOMENT BEAM
LOAD CELL**
 Environmentally Sealed
\$545

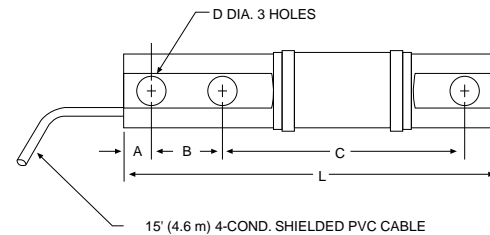
Model LC602-250
 Shown Smaller Than Actual Size



WIRING CODE
 RED + INPUT
 BLACK - INPUT
 GREEN +OUTPUT
 WHITE -OUTPUT
 YELLOW SHIELD



Dimensions Shown in Inches (mm)



| Capacity (lb) | L | E | W | A | B | C | D |
|---------------|----------------|--------------|--------------|---------------|---------------|---------------|---------------|
| 50-100 | 6.00 (152) | 1.37 (35) | 1.06 (27) | 0.37 (9.3) | 0.875 (22) | 4.25 (108) | 0.31 (7.9) |
| 250-1500 | 6.66 (169) | 1.37 (35) | 1.06 (27) | 0.50 (13) | 1.13 (29) | 4.25 (108) | 0.53 (13) |
| 2000-2500 | 11.38 (289) | 2.25 (57) | 1.25 (32) | 0.50 (13) | 1.75 (44) | 8.25 (210) | 0.53 (13) |
| 5000-10,000 | 12.75 (323) | 3.75 (95) | 2.75 (70) | 0.75 (19) | 2.00 (51) | 8.50 (216) | 0.78 (20) |

Safe Overload: 150% of Capacity
Ultimate Overload: 300% of Capacity
Input Resistance: 360 ohms minimum
Output Resistance: 350 ± 5 ohms
Full Scale Deflection: 0.010 to 0.015" Typ
Construction: Stainless Steel

Agency Approvals: FM/CSA Intrinsically Safe IS/I.II.III/1/CDEFG
Electrical: 15 ft. (4.6 m) PVC insulated 4-conductor shielded color coded cable

► **Most Popular Models Highlighted** ◀

Prices Shown in U.S. Dollars

| To Order: (Specify Model Number) | | | |
|---|-------------------|--------------|-------------------|
| Capacity (lb) | Model Number | Price | Compatible Meters |
| ±50 | LC602-50 | \$545 | INFW, INFS, INFCS |
| ±100 | LC602-100 | 545 | INFW, INFS, INFCS |
| ±250 | LC602-250 | 545 | INFW, INFS, INFCS |
| ±500 | LC602-500 | 630 | INFW, INFS, INFCS |
| ±1,000 | LC602-1K | 630 | INFW, INFS, INFCS |
| ±1,500 | LC602-1.5K | 630 | INFW, INFS, INFCS |
| ±2,000 | LC602-2K | 630 | INFW, INFS, INFCS |
| ±2,500 | LC602-2.5K | 630 | INFW, INFS, INFCS |
| ±5,000 | LC602-5K | 745 | INFW, INFS, INFCS |
| ±7,500 | LC602-7.5 | 745 | INFW, INFS, INFCS |
| ±10,000 | LC602-10K | 745 | INFW, INFS, INFCS |

Interchangeable with Model TC-BB

Metric Ranges Available - Consult Engineering

Ordering Examples: 1.) LC602-2.5K is a 2,500 lb capacity load cell, \$630
 2.) LC602-250 is a 250 lb capacity load cell, \$545.